

# The Prince Henry Cliff Walk



**3 hrs 30 mins**

**Moderate track**

**6.8 km One way**

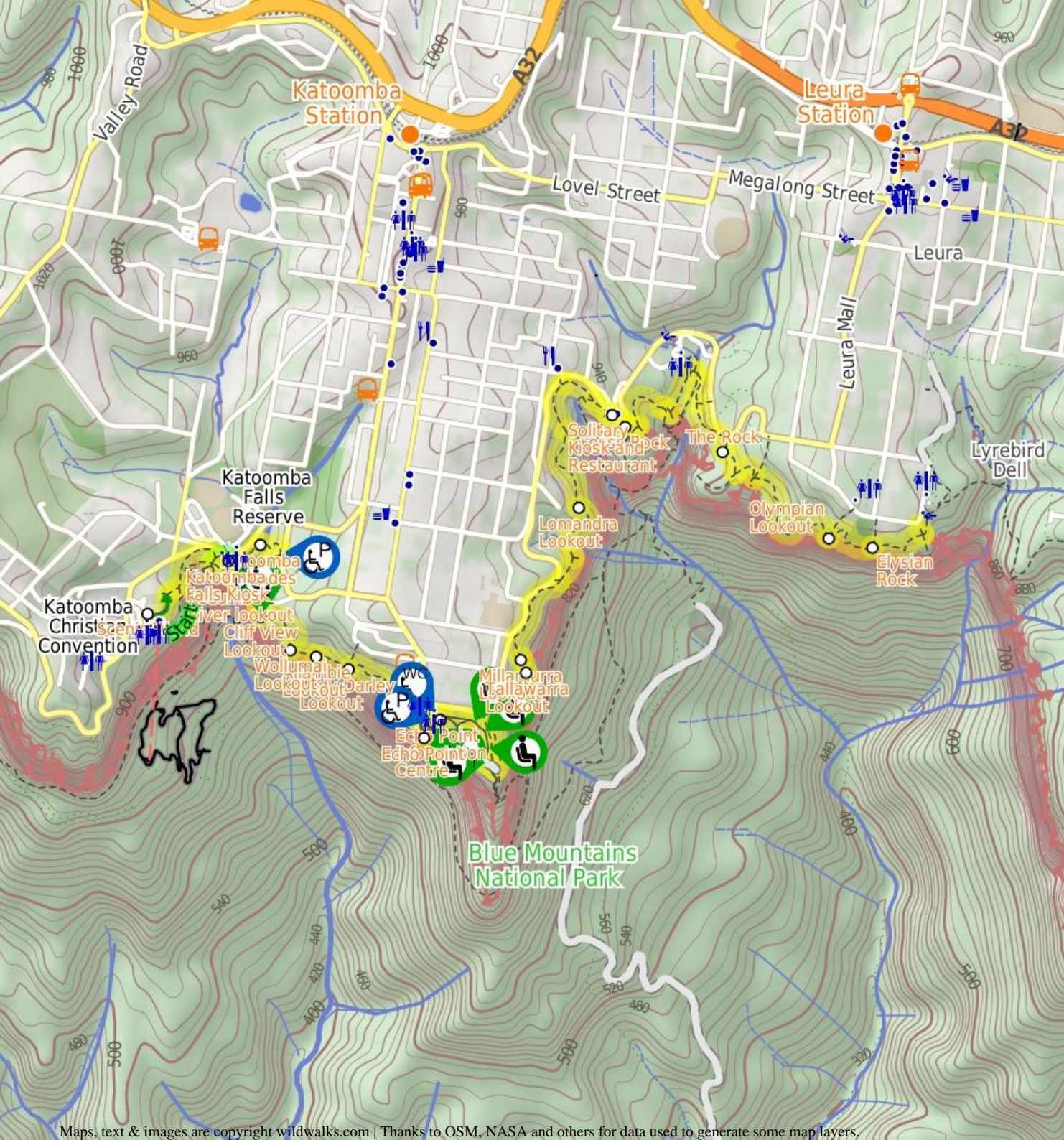
**▲ 575m**



Going from Katoomba to Leura, this walk covers the top of the cliff line and most of the major lookouts. With brilliant vistas all along the way, the views of the Jamison Valley are truly amazing. Time should be set aside to dawdle along the cliffs and soak up the serenity of the cliffs.

864m

952m



## Scenic World

Scenic World is one of the most renowned tourist attractions of Katoomba and the Blue Mountains. Located on the cliffs of the Jamison Valley, visitors can enjoy a ride on the Scenic Railway (the world's steepest incline railway) or the Scenic Cableway, into the Jamison Valley, and explore the Scenic Walkway from the base. Alternatively, the Scenic Skyway offers a bird's eye view over the valley, with a glass floor to enhance the experience. Scenic World also features a revolving restaurant, a cafe and a kiosk, in addition to the documentary theatre and souvenir shop. Rides can be purchased, starting from \$16 for adults and \$10 for children, and combination or family passes are available. [More info.](#)

## Katoomba Falls Kiosk

The Katoomba Falls Kiosk serves a variety of light and healthy meals including breakfast, lunch and Devonshire teas. A drink enjoyed here will add to the experience of any local bushwalk. For more information, phone (02) 4782-4868. [More info.](#)

## Kedumba River lookout

This unnamed, fenced lookout is at the bend in the track along Kedumba River, at the top of Katoomba Falls. The lookout gives great views across the valley to Mount Solitary and Narrow Neck. There are also glimpses of the Katoomba Falls as it drops away, far into the valley below.

## Katoomba Cascades

Popular with locals and visitors alike, these picturesque cascades are on the Kedumba River. The cascades are nestled in the bend on Cliff Drive, near Katoomba Park. There are stepping stones across the creek at the bottom of the falls and a bench seat in the shade. There are a few small clearings where visitors can sit and enjoy the falls.

## Cliff View Lookout

This large, fenced wheelchair accessible lookout provides great mountain views of Mt Solitary, Kedumba Valley, Narrow Neck and across to Scenic World. There's a bench seat at the back of the lookout to enjoy the views from. The lookout fence is 1.2m high, the platform is 7.8x5.5m wide.

## Before You walk

Bushwalking is fun and a wonderful way to enjoy our natural places. Sometimes things go bad, with a bit of planning you can increase your chance of having an enjoyable and safer walk. Before setting off on your walk check

- 1) Weather Forecast ([BOM Central Tablelands District](#))
- 2) Fire Dangers ([Greater Sydney Region](#))
- 3) Park Alerts ([Blue Mountains National Park](#))
- 4) Research the walk to check your party has the skills, fitness and equipment required
- 5) Agree to stay as a group and not leave anyone to walk solo

## Think before you TREK

The 'Think before you TREK' program developed by NSW Police & NPWS promotes the benefits of planning ahead for your bushwalking trip by using an easy to remember acronym:

- T** Take adequate supplies of food, water, navigation and first aid equipment.
- R** Register your planned route and tell friends and family when you expect to return.
- E** Emergency beacon (PLB's) should be carried on walks with significant gaps in mobile coverage (check terrain profile).
- K** Keep to your planned route and follow the map and walking trails.


## Topo Maps

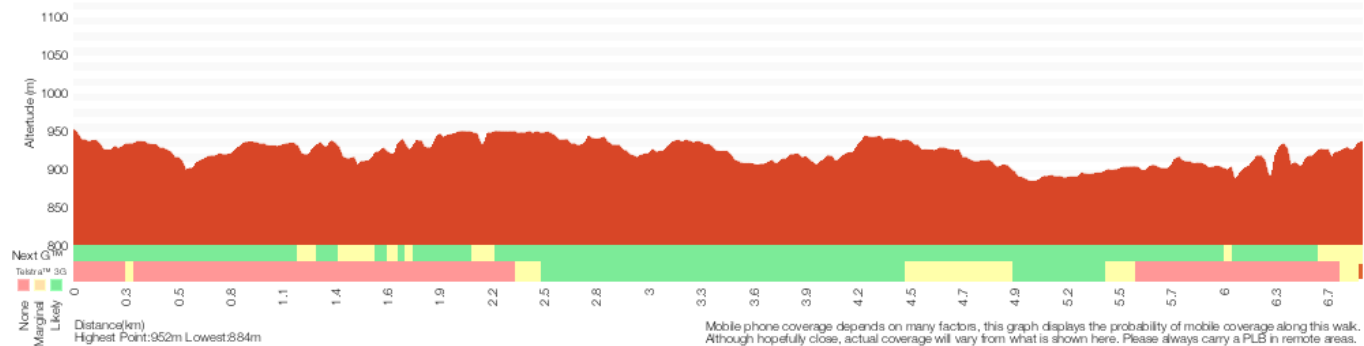
The maps provided on wildwalks are helpful, but there are times where you may need maps covering a broader area. Maps that cover this walk include;

- 1:50 000 Map Series:**Six Foot Track  
**1:25 000 Map Series:**89301S KATOOMBA  
**1:100 000 Map Series:**8930 KATOOMBA

## Grade

This walk has been graded using the AS 2156.1-2001. The overall grade of the walk is determined by the highest classification along the whole track.

 <b>Grade 3/6</b> Moderate track	
<b>Length</b>	6.8 km One way
<b>Time</b>	3 hrs 30 mins
<b>Quality of track</b>	Formed track, with some branches and other obstacles (3/6)
<b>Signs</b>	Directional signs along the way (3/6)
<b>Experience Required</b>	Some bushwalking experience recommended (3/6)
<b>Weather</b>	Weather generally has little impact on safety (1/6)
<b>Infrastructure</b>	Limited facilities, not all cliffs are fenced (3/6)



### Are you ready to have fun?

Please ensure you and your group are well prepared and equipped for all possible hazards and delays. Check park closures, weather information and Fire Danger Rating before setting out. Optional side trips and alternate routes noted are not included in this walk overall grade, length or time estimate. Please allow extra time for resting and exploring areas of interest. The authors, staff and owners of wildwalks take care in preparing this information but will not accept responsibility for any inconvenience, loss or injury you may experience. Please take care, have fun - Happy Walking.

**Getting there** You can get to Scenic World (gps: -33.7286, 150.301) by car or bus. Car: There is free parking available.

You can get back from Corner of Olympian Parade and Lone Pine Ave (gps: -33.7254, 150.3319) by car or bus. Car: There is free parking available.

Find up to date and more information including; travel directions, weather, park closures and walker feedback at <http://wild.tl/tpbcw>

### 0 | Scenic World

Scenic World is one of the most renowned tourist attractions of Katoomba and the Blue Mountains. Located on the cliffs of the Jamison Valley, visitors can enjoy a ride on the Scenic Railway (the world's steepest incline railway) or the Scenic Cableway, into the Jamison Valley, and explore the Scenic Walkway from the base. Alternatively, the Scenic Skyway offers a bird's eye view over the valley, with a glass floor to enhance the experience. Scenic World also features a revolving restaurant, a cafe and a kiosk, in addition to the documentary theatre and souvenir shop. Rides can be purchased, starting from \$16 for adults and \$10 for children, and combination or family passes are available. [More info.](#)

### 0 | Scenic World

*(430 m 9 mins)* From the Scenic World main entrance, this walk follows the 'Prince Henry Cliff Walk' signs down the concrete steps and around to the back of the building, where it comes to a wooden footbridge that curves around behind the main car park. At the end of the footbridge, this walk comes to an intersection with the Prince Henry Cliff Walk.

Continue straight: From the intersection, this walk follows the bush track down the gentle hill, winding down some wooden steps as the track bends around to the right. It then arrives at the signposted intersection of the 'Prince Henry Cliff Walk' and the track to the base of the Scenic Railway.

Veer left: From the intersection, the walk follows the 'Caravan Park' sign along the bush track that winds along the side of the hill, heading through the forest to the signposted intersection of the Prince Henry Cliff Walk at the back of the park, near the Katoomba Falls Kiosk.

### 0.43 | Optional sidetrip to Katoomba Falls Kiosk

*(50 m 1 mins)* Turn left: From the intersection, this walk crosses through the park, passing the large information signs and the water fountain, arriving at the Katoomba Kiosk. At the end of this side trip, retrace your steps back to the main walk then Continue straight.

### 0.43 | Katoomba Falls Kiosk

The Katoomba Falls Kiosk serves a variety of light and healthy meals including breakfast, lunch and Devonshire teas. A drink enjoyed here will add to the experience of any local bushwalk. For more information, phone (02) 4782-4868. [More info.](#)

### 0.43 | Int of Katoomba Kiosk Track and Prince Henry Cliff

*(100 m 3 mins)* Veer right: From the intersection, this walk follows the 'Reids Plateau' sign down the concrete stairs, passing a 'Greenspace Project' sign. The walk continues down to the bottom of the stairs and to the intersection of the Katoomba Falls Walk and the Prince Henry Cliff Walk (unsignposted).

Turn left: From the intersection, this walk follows the 'Prince Henry Cliff Walk' signpost down the hardened footpath, winding down some wooden steps to the bottom of the hill, where it flattens out and continues through the forest for a short distance before coming to the intersection of Solitary Lookout track.

### 0.53 | Int of Solitary Lookout track and Prince Henry Cli

*(60 m 3 mins)* Continue straight: From the intersection, the walk follows the footpath down the gentle hill for a short distance and arrives at the Kedumba River lookout.

### 0.59 | Kedumba River lookout

This unnamed, fenced lookout is at the bend in the track along Kedumba River, at the top of Katoomba Falls. The lookout gives great views across the valley to Mount Solitary and Narrow Neck. There are also glimpses of the Katoomba Falls as it drops away, far into the valley below.

### 0.59 | Kedumba River lookout

*(180 m 4 mins)* Veer left: From the lookout, this walk heads north along the bush track, winding along the left-hand side of the gully. The walk comes to the Kedumba River and follows it upstream through the forest, until the track bends down to the river crossing, just downstream of the cascades.

### 0.77 | Katoomba Cascades

Popular with locals and visitors alike, these picturesque cascades are on the Kedumba River. The cascades are nestled in the bend on Cliff Drive, near Katoomba Park. There are stepping stones across the creek at the bottom of the falls and a bench seat in the shade. There are a few small clearings where visitors can sit and enjoy the falls.

### 0.77 | Katoomba Cascades

*(130 m 3 mins)* Continue straight: From the intersection, this walk crosses to the eastern side of the creek and continues up the wooden steps, winding to the top of the hill. From here, the track bends to the right and continues along through the park for a short while until coming to the intersection of Cliff Drive.

### 0.89 | Katoomba Falls Park

*(280 m 7 mins)* Turn right: From the intersection (by the signposted mobility parking bay on Cliff Drive, about 120m from Katoomba Falls Road), this walk follows the 'Cliff View Lookout 10 mins' sign gently uphill along the stenciled concrete path (with handrails on the right) for about 60m. This walk then meanders along the path gently downhill for about 45m to come to a start of the second handrail (on the left) and this walk becomes a bit steeper downhill. After about 60m this walk flattens and continues gently uphill for about 80m to come to a 3-way intersection with the 'Skyway East Station' staircase (on the left).

Continue straight: From the intersection, this walk follows the stenciled concrete path keeping the handrails on the right, almost immediately passing under the cables of the 'Skyway' cable car. This walk continues for about 40m and goes up and over a gentle rise to come to a concrete platform marked by the 'Cliff View Lookout' sign on the fence.

### 1.17 | Cliff View Lookout

This large, fenced wheelchair accessible lookout provides great mountain views of Mt Solitary, Kedumba Valley, Narrow Neck and across to Scenic World. There's a bench seat at the back of the lookout to enjoy the views from. The lookout fence is 1.2m high, the platform is 7.8x5.5m wide.

### 1.17 | Cliff View Lookout

*(240 m 8 mins)* Turn left: Keeping the lookout and the valley to the right, the

walk follows the bush track heading up and away from the cliffs, winding through the thick scrub until it passes a picnic bench, and continues along for a short while to Wollumai Lookout.

### 1.41 | Wollumai Lookout

Wollumai Lookout is a small, fenced lookout on the side of the Prince Henry Cliff Track. The lookout is on a sandstone platform at the base of a cliff, and looks over a much larger drop into the Jamison Valley. There is a bench seat to enjoy the views over the valley, including Mount Solitary, Narrow Neck and glimpses of the Three Sisters.

### 1.41 | Wollumai Lookout

*(100 m 3 mins)* Continue straight: With the lookout and the valley to the right, the walk follows the bush track as it winds along the side of the hill through thick scrub for a short distance, before heading down some concrete steps and continuing through a patch of tall gum trees, until it comes to the Allambie Lookout.

### 1.51 | Allambie Lookout

Allambie Lookout is a small, fenced lookout on the side of the Prince Henry Cliff Track. The lookout provides an opportunity to enjoy the valley view and the sights of the Three Sisters, Kings Tablelands and Mount Solitary.

### 1.51 | Allambie Lookout

*(140 m 4 mins)* Continue straight: From Allambie Lookout, this walk follows the bush track heading east, keeping the lookout and the valley to the right. The walk winds down a few wooden steps and continues along the bottom of a short rock cliff. The track then comes to base of a long set of wooden steps which it climbs to the top, coming to a short metal staircase which leads up to the Lady Darley Lookout.

### 1.65 | Lady Darley Lookout

Lady Darley Lookout is a moderately-sized, fenced lookout, found on the Prince Henry Cliff Track. The lookout can also be accessed directly by a track from Panorama Drive. There is an information sign describing the view and the traditional naming of the natural features. The panoramic views from the lookout are great, from Kings Tableland on the left to Mount Solitary, Narrow Neck and parts of Scenic World on the far right.

### 1.65 | Lady Darley Lookout

*(200 m 8 mins)* Veer right: From the lookout, this walk follows the 'Grand Cliff Top Track' sign towards Echo Point, heading down the wooden steps and along the side of the hill. After a short while, the track joins onto a concrete footpath, coming to the Kedumba View at the information sign a short distance later.

### 1.85 | Kedumba View

*(280 m 10 mins)* Turn left: Keeping the Kedumba View to the right, the walk follows the footpath along the side of the hill, winding through the bush until coming to the intersection of the Echo Point and the Queen Elizabeth Lookout paths.

Veer left: From the intersection, this walk heads up the concrete ramp, climbing up the gentle hill to Echo Point.

### 2.13 | Echo Point

Echo Point is the Blue Mountains' most famous and popular lookout, home to one of the best photo opportunities for the Three Sisters. Visited by over two million tourists each year, this popular spot also serves as the starting point for many great walks in the area. The lookout is well fenced, has information signs and stunning views across the valley to the Three Sisters and Mount Solitary. There are mounted binoculars and seats nearby.

### 2.13 | Echo Point

*(90 m 4 mins)* Turn left: From the formal Echo Point Lookout, this walk heads away from the view, uphill across the wideopen concrete area. After 30m the walk passes a large concrete seat (on the right), where the walk continues for another 20m to pass a similar seat (also on the right). The walk continues up to the the front of the visitor center (on the right) and the mobility parking area (on the left).

### 2.22 | Echo Point Information Centre

This modern building at Echo Point is a great source of information. It is open daily from 9am-5pm (except Christmas Day). There is a large range of books, maps and information about the area (and ice creams). There are toilets opposite the entrance, and mobility parking opposite. For more information, phone 1300 653 408. [More info.](#)

### 2.22 | Echo Point Information Center

*(30 m 1 mins)* Continue straight: From the front of the visitor center, this walk heads gently uphill, following the 'Three Sister walk' sign. The walk soon passes the toilet block and veers right to pass under the stone archway and come to an intersection with a path (on the right) just past the 'Blue Mountains National Park' sign.

### 2.25 | Echo Point Archway Intersection

*(780 m 18 mins)* Continue straight: From the intersection, this walk heads along the 'Three Sisters walkway' footpath, initially keeping the metal fence to the right. The smooth concrete path leads up and over a rise then leads gently downhill for about 80m to a signposted three-way intersection.

Continue straight: From the intersection, this walk follows the 'Three Sisters 400m' arrow downhill along the concrete path, keeping the valley to the right. After about 15m the walk leads past a stone seat (on the left), with a blue tongue lizard sculpture. The walk continues gently downhill for another 60m to pass another sandstone seat (on the left). From here the path winds gently downhill for another 70m to find yet another sandstone seat (on the left). The path continues downhill for another 45m to find a clear intersection marked with a large 'Three Sisters Walk' sign. On the right is a small flat loose gravel area with two seats.

Veer left: From the intersection, this walk follows the track winding up the hill and through the bush, away from the cliffs and the valley, for about 50m before coming to the intersection of the Lady Game track.

Turn left : From the intersection, the walk follows the 'Leura Cascades' sign along the bush track, winding around through the bush and following the cliffs (further down the hill to the right) around the valley until coming to the intersection with the Lady Carrington Lookout track.

Veer left: From the intersection, the walk follows the 'Leura Cascades' sign along the bush track which winds through the forest, gradually climbing up a long gentle hill. The track then flattens out and follows a metal fence-line to the 'Tallawarra Lookout' shortly after (marked on some maps as 'Tallawalla Lookout').

### 3.03 | Tallawarra Lookout

Tallawarra Lookout is a small, fenced lookout near Silver Mist Picnic Area, along Prince Henry Cliff walk. The lookout provides an excellent view of Sublime Point and Kings Tableland. Leura Falls and Gordon Creek both flow through the valley below. There are a few bench seats just near the lookout. (Note: the lookout is marked as 'Tallawalla Lookout' on some maps.)

### 3.03 | Tallawarra Lookout

*(60 m 2 mins)* Veer left: From the lookout, this walk follows the 'Leura Cascades' sign along the bush track winding around the edge of the valley for a short while before coming to the fenced-off rock platform signposted as 'Millamurra Lookout'.

### 3.09 | Millamurra Lookout

Millamurra Lookout is on a fenced, elevated rock platform on the side of the Prince Henry Cliff Walk. There are views of the Jamison Valley, including the Leura Falls Creek and Sublime Point. There is also a great view along the Kings Tableland escarpment to the right.

### 3.09 | Millamurra Lookout

*(390 m 10 mins)* Continue straight: From the intersection, this walk follows the bush track, keeping the valley down to the right, as it continues along for a short while before coming to the Honeymoon Lookout, which is up the hill on the left-hand side of the track. The track passes the lookout and comes to the intersection of the bush track heading up to the lookout straight after.

### 3.47 | Int of Prince Henry Cliff Walk and Honeymoon Looko

*(360 m 5 mins)* Continue straight: From the intersection, the walk follows the bush track, keeping the valley and the cliffs down the hill to the right as it winds through the forest, until it comes to the signposted 'Honeymoon Point', shortly after the metal fence starts of the right.

Veer left: From the intersection, this walk follows the bush track heading away from the lookout, keeping the valley down the hill to the right as it winds down a set of wooden steps to the signposted Banksia Streamlet.

Continue straight: Keeping the valley down the hill to the right, the walk crosses the streamlet at the wooden bridge. The track continues up the wooden steps on the other side to the top of the hill, where the track flattens out and continues past a picnic chair and along the side of the hill to the Lomandra Lookout.

### 3.83 | Lomandra Lookout

Lomandra Lookout is a fenced lookout along Prince Henry Cliff Walk, near Katoomba. Unlike other lookouts in the area, there are no sweeping distant views, but atop this cliff there is a great close-up view of the canopy of the surrounding bush. There is a bench seat on the rock platform, making a nice place for a rest.

### 3.83 | Lomandra Lookout

*(780 m 21 mins)* Continue straight: From the Lomandra Lookout, this walk follows the bush track, keeping the valley down to the right, as it winds through thick forest along the side of the hill, winding all the way around and up a set of wooden steps to the signposted intersection of the 'Burrabarroo Lookout' track.

Veer left: From the intersection, the walk follows the 'Leura Cascades' sign, climbing up the wooden steps and continuing along the bush track that winds through the forest, until coming to the intersection with the Carrington Park track.

Continue straight: From the intersection, this walk follows the 'Leura Cascades 1km' sign down the wooden steps and along the bush track, winding through the forest until coming to the signposted intersection of the 'Leura Forest' Track.

Continue straight: From the intersection, this walk follows the 'Leura Cascades' sign along the well-defined bush track, winding through the bush to the signposted intersection of the Echo Tree track at the bottom of the short set of stairs.

Turn left: From the intersection, this walk follows the short set of wooden steps up to Cliff Drive, opposite the car park behind Solitary Restaurant.

### 4.61 | Solitary Kiosk and Restaurant

Solitary Restaurant offers fine dining in a heritage-listed building overlooking the beautiful Jamison Valley, as well as housing a kiosk for a more casual lunch. The kiosk is open for lunch 7 days a week, from 10am to 4pm (opens 11am weekdays in winter). The kiosk provides a casual dining experience, with breakfast foods from \$10 and lunches around \$15 per dish.

The restaurant is open for lunch 7 days from 12-4.30pm, and dinner on Fridays and Saturdays from 6pm. Light lunches start from \$14, and dinners from \$55 for a mouth-watering 2 course meal. Contact details - 90 Cliff Drive, Leura Falls Ph: 02 4782 1164. [More info.](#)

### 4.61 | Int of Cliff Drive and Prince Henry Cliff Walk

*(80 m 2 mins)* Veer right: From the top of the stairs, this walk follows Cliff Drive down the gentle hill towards the point, passing the restaurant and the sandstone pillar, to the signposted intersection of the Prince Henry Cliff Walk.

Turn right: From the intersection, the walk follows the Leura Cascades sign down the wooden steps and along the short bush track to Fossil Rock Lookout.

### 4.69 | Fossil Rock

Fossil Rock is a fenced lookout along Prince Henry Cliff Walk, near Katoomba. The lookout is close to Cliff Drive and gives great views along the Jamison Valley and over Mount Solitary, and along the far end of Kings Tableland. The sandstone floor of the lookout is mostly natural and has a few steps cut in it. The rock provides some natural sculptures to enjoy.

### 4.69 | Fossil Rock

*(510 m 11 mins)* Turn left: Keeping the lookout and the valley to the right, the walk follows the bush track winding down the hill for a short while, before coming to the signposted intersection of the 'Copelands Lookout' track.

Veer left: From the intersection, the walk follows the track winding along the side of the hill, keeping the cliffs and the valley down to the right, soon coming to the signposted intersection with the track to 'Bridal Veil Lookout'.

Turn left: Keeping the signposted 'Bridal Veil Lookout' track to the right, this walk follows the track winding around the top edge of the valley and down a metal staircase, continuing along a fenced, wooden footbridge and down the side of the hill via wooden and metal steps, to the sign pointing back along the 'Prince Henry Walk' to 'Echo Point'.

Veer left: From the intersection, this walk follows the sign along the 'Prince Henry Cliff Walk' towards 'Leura Cascades', taking the higher track. The track heads along the side of the hill to come to a three-way intersection, just after passing a rock wall on the left.

Turn left: From the intersection, this walk steps up over a few rocks to keep the main rock outcrop on the left (and the valley and waterfall on the right).

The track soon passes a small overhang with a bench seat, and gently winds along the side of the hill. After heading down the stairs, the track come to a 'T' intersection, with a handrail and a sign pointing back up to 'Echo Point'.

### 5.2 | Int of Prince Henry Cliff Walk and Leura Park Trac

*(380 m 7 mins)* Turn right: From the intersection, this walk follows the 'Leura Cascades' sign across the footbridge to a 'Y' intersection.

Veer left: From the intersection, this walk follows the 'Prince Henry Cliff Walk To Gordon Falls' sign up the timber steps. The walk continues along the bush track that steadily climbs to the top of the gentle hill, where it comes to an intersection with the Cliff Drive bush track.

Continue straight: From the intersection, the walk follows the bush track heading around the side of the hill, winding through the bush until it comes to the intersection of the short bush track to Cliff Drive.

Veer right: From the intersection, this walk follows the bush track winding around the valley down to the right for a short while, before coming to 'The Rock' lookout just off the track on the right.

### 5.58 | The Rock

The Rock is a small, partially-fenced lookout, about 10 metres from the Prince Henry Cliff Walk near Bridal Veil Falls. The old timber fence only

partially covers the cliff line and the walk to the lookout can be slippery. The view from the lookout includes close-up views of the crowns of several trees. There is no view of Bridal Veil Falls, but the view does extend across to the cliffs at Bridal View Lookout.

#### 5.58 | The Rock

*(740 m 22 mins)* Turn left: From the lookout, this walk follows the bush track winding around the valley, down to the right, heading under a large rock overhang and continuing steadily up the long rocky hill to the signposted intersection of the Bridal View Lookout.

Turn left: From the intersection, this walk follows the 'Gordon Falls' sign along the bush track, winding through the dense bush for a short while before gradually climbing up a gentle hill to the signposted intersection of the Tarpeian Rock track.

Continue straight: From the intersection, the walk follows the 'Gordon Falls' sign down the wooden steps and along the track. Notice the environment change to rainforest as the track winds around the valley down to the right. The walk follows the base of some tall rock overhangs, then climbs up a long set of wooden steps that continue on to rock steps, coming to 'Olympian Rock' lookout.

#### 6.32 | Olympian Lookout

Olympian Lookout is a fenced lookout, just off the Prince Henry Cliff Walk, near Olympian Pde in Leura. The lookout is on a sloped, natural sandstone surface and has some steps cut to help improve access. The lookout is right at the edge of the cliff and provides a great view across the Jamison Valley, out to Mount Solitary. The 'back' of the Three Sisters, and also Narrow Neck, are both visible on the right, and Sublime Point on the left.

#### 6.32 | Olympian Lookout

*(230 m 13 mins)* Continue straight: From the lookout, this walk follows the bush track past the "Welcome to the Blue Mountains National Park" sign, keeping the valley down the hill to the right as it winds through the bush. The walk comes to a lookout just before the Buttenshaw Bridge, which it then crosses, continuing up the steps to the Elysian Rock Lookout on the other side.

#### 6.55 | Elysian Rock

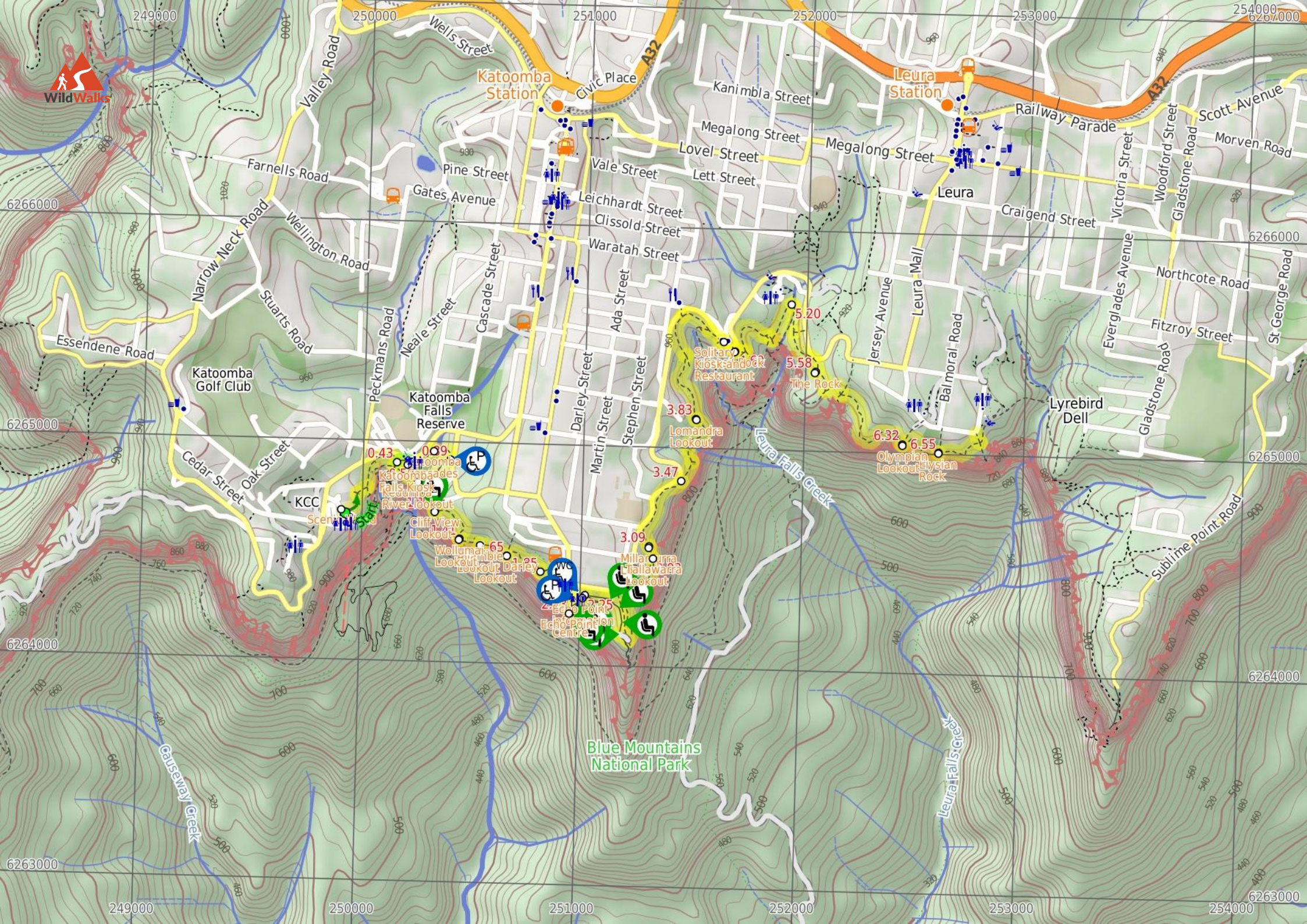
Elysian Rock is a fenced, small, narrow lookout on a rock buttress. The floor is mostly uneven, natural sandstone and there is a bench seat with no shade. The lookout is right at the edge of the cliff and gives a great view straight across the Jamison Valley and out to Mount Solitary. Narrow Neck and the 'back' of the Three Sisters are visible on the right-hand side, and Sublime Point on the left. The lookout is along the Prince Henry Cliff Walk, just west of a concrete bridge spanning a chasm and near the end of Elysian Place, Leura.

#### 6.55 | Elysian Lookout

*(270 m 8 mins)* Veer right: From Elysian Lookout, keeping the valley down to the right, this walk follows the bush track winding through the dense scrub-like forest as it heads up a few wooden steps onto a small platform and continues up the hill to the top, at the intersection of the Gordon Falls Lookout track.

Turn left: From the intersection, this walk goes up the steps and into the park, and connects to the corner of Lone Pine Ave and Olympian Pde.





Katoomba Station

Leura Station

Katoomba Golf Club

Katoomba Falls Reserve

Solitary Kiosk and Rock Restaurant

Lomandra Lookout

Echo Point Centre

Blue Mountains National Park

Katoomba Falls Lookout

Cliff View Lookout

Wollumait Lookout

Wollumait Lookout

Millalorra Falls Lookout

Millalorra Falls Lookout

5.20

5.58

6.32

6.55

6266000

6265000

6264000

6263000

6266000

6265000

6264000

6263000

249000

250000

251000

252000

253000

254000

249000

250000

251000

252000

253000

254000

6267000

6266000

6265000

6264000

6263000

## Summary navigation sheet for the The Prince Henry Cliff Walk



km	From	Up/Dwn	Length	Initial directions (Use full tracknotes and maps for more detail)
Start	Scenic World -33.7286,150.301 (GR Katoomba, 499647)	18 -39	430 m 9 mins	From the Scenic World main entrance, this walk follows the 'Prince Henry Cliff Walk' signs down the concrete steps and around to the back of the building, where it comes to a wooden footbridge that curves around beh...
0.43	Int of Katoomba Kiosk Track and Prince Henry Cliff Walk -33.7265,150.3035 (GR Katoomba, 502649)	2 0	50 m 1 mins	Optional sidetrip to Katoomba Falls Kiosk. Turn left : From the intersection, this walk crosses through the park, passing the large information signs and the water fountain, arriving at the Katoomba Kiosk.
0.43	Int of Katoomba Kiosk Track and Prince Henry Cliff Walk -33.7265,150.3035 (GR Katoomba, 502649)	1 -18	100 m 3 mins	Veer right: From the intersection, this walk follows the 'Reids Plateau' sign down the concrete stairs, passing a 'Greenspace Project' sign.
0.53	Int of Solitary Lookout track and Prince Henry Cliff Walk -33.727,150.304 (GR Katoomba, 502648)	3 -18	60 m 3 mins	Continue straight: From the intersection, the walk follows the footpath down the gentle hill for a short distance and arrives at the Kedumba River lookout.
0.59	Kedumba River lookout -33.7273,150.3045 (GR Katoomba, 503648)	22 -4	180 m 4 mins	Veer left: From the lookout, this walk heads north along the bush track, winding along the left-hand side of the gully.
0.77	Katoomba Cascades -33.726,150.3053 (GR Katoomba, 503650)	18 -1	130 m 3 mins	Continue straight: From the intersection, this walk crosses to the eastern side of the creek and continues up the wooden steps, winding to the top of the hill.
0.89	Katoomba Falls Park -33.7264,150.3061 (GR Katoomba, 504649)	10 -28	280 m 7 mins	Turn right: From the intersection (by the signposted mobility parking bay on Cliff Drive, about 120m from Katoomba Falls Road), this walk follows the 'Cliff View Lookout 10 mins' sign gently uphill along the stencil...
1.17	Cliff View Lookout -33.7285,150.3054 (GR Katoomba, 503647)	25 -29	240 m 8 mins	Turn left: Keeping the lookout and the valley to the right, the walk follows the bush track heading up and away from the cliffs, winding through the thick scrub until it passes a picnic bench, and continues along fo...
1.41	Wollumai Lookout -33.7296,150.3066 (GR Katoomba, 504646)	10 -13	100 m 3 mins	Continue straight: With the lookout and the valley to the right, the walk follows the bush track as it winds along the side of the hill through thick scrub for a short distance, before heading down some concrete ste...
1.51	Allambie Lookout -33.7299,150.3076 (GR Katoomba, 505645)	19 -11	140 m 4 mins	Continue straight: From Allambie Lookout, this walk follows the bush track heading east, keeping the lookout and the valley to the right.
1.65	Lady Darley Lookout -33.7303,150.3089 (GR Katoomba, 507645)	36 -27	200 m 8 mins	Veer right: From the lookout, this walk follows the 'Grand Cliff Top Track' sign towards Echo Point, heading down the wooden steps and along the side of the hill.
1.85	Kedumba View -33.731,150.3105 (GR Katoomba, 508644)	30 -27	280 m 10 mins	Turn left: Keeping the Kedumba View to the right, the walk follows the footpath along the side of the hill, winding through the bush until coming to the intersection of the Echo Point and the Queen Elizabeth Lookout...
2.13	Echo Point -33.7327,150.312 (GR Katoomba, 510642)	22 -3	90 m 4 mins	Turn left: From the formal Echo Point Lookout, this walk heads away from the view, uphill across the wideopen concrete area.
2.22	Echo Point Information Center -33.7321,150.3124 (GR Katoomba, 510643)	0 -1	30 m 1 mins	Continue straight: From the front of the visitor center, this walk heads gently uphill, following the 'Three Sister walk' sign.
2.25	Echo Point Archway Intersection -33.732,150.3127 (GR Katoomba, 510643)	31 -60	780 m 18 mins	Continue straight: From the intersection, this walk heads along the 'Three Sisters walkway' footpath, initially keeping the metal fence to the right.
3.03	Tallawarra Lookout -33.7305,150.316 (GR Katoomba, 513645)	6 -3	60 m 2 mins	Veer left: From the lookout, this walk follows the 'Leura Cascades' sign along the bush track winding around the edge of the valley for a short while before coming to the fenced-off rock platform signposted as 'Mill...
3.09	Millamurra Lookout -33.73,150.3159 (GR Katoomba, 513645)	26 -26	390 m 10 mins	Continue straight: From the intersection, this walk follows the bush track, keeping the valley down to the right, as it continues along for a short while before coming to the Honeymoon Lookout, which is up the hill ...
3.47	Int of Prince Henry Cliff Walk and Honeymoon Lookout Tracks -33.7273,150.3174 (GR Katoomba, 514648)	23 -26	360 m 5 mins	Continue straight: From the intersection, the walk follows the bush track, keeping the valley and the cliffs down the hill to the right as it winds through the forest, until it comes to the signposted 'Honeymoon Poi...

## Summary navigation sheet for the The Prince Henry Cliff Walk



km	From	Up/Dwn	Length	Initial directions (Use full tracknotes and maps for more detail)
3.83	Lomandra Lookout -33.7247,150.3182 (GR Katoomba, 515651)	57 -47	780 m 21 mins	Continue straight: From the Lomandra Lookout, this walk follows the bush track, keeping the valley down to the right, as it winds through thick forest along the side of the hill, winding all the way around and up a ...
4.61	Int of Cliff Drive and Prince Henry Cliff Walk -33.7216,150.3195 (GR Katoomba, 516655)	3 -16	80 m 2 mins	Veer right: From the top of the stairs, this walk follows Cliff Drive down the gentle hill towards the point, passing the restaurant and the sandstone pillar, to the signposted intersection of the Prince Henry Cliff...
4.69	Fossil Rock -33.722,150.3201 (GR Katoomba, 517654)	18 -44	510 m 11 mins	Turn left: Keeping the lookout and the valley to the right, the walk follows the bush track winding down the hill for a short while, before coming to the signposted intersection of the 'Copelands Lookout' track.
5.20	Int of Prince Henry Cliff Walk and Leura Park Track -33.7201,150.3229 (GR Katoomba, 519657)	18 -9	380 m 7 mins	Turn right: From the intersection, this walk follows the 'Leura Cascades' sign across the footbridge to a 'Y' intersection.
5.58	The Rock -33.7228,150.324 (GR Katoomba, 520654)	67 -75	740 m 22 mins	Turn left: From the lookout, this walk follows the bush track winding around the valley, down to the right, heading under a large rock overhang and continuing steadily up the long rocky hill to the signposted inters...
6.32	Olympian Lookout -33.7258,150.3283 (GR Katoomba, 524650)	75 -50	230 m 13 mins	Continue straight: From the lookout, this walk follows the bush track past the "Welcome to the Blue Mountains National Park" sign, keeping the valley down the hill to the right as it winds through the bush.
6.55	Elysian Lookout -33.7261,150.3301 (GR Katoomba, 526650)	37 -19	270 m 8 mins	Veer right: From Elysian Lookout, keeping the valley down to the right, this walk follows the bush track winding through the dense scrub-like forest as it heads up a few wooden steps onto a small platform and contin...